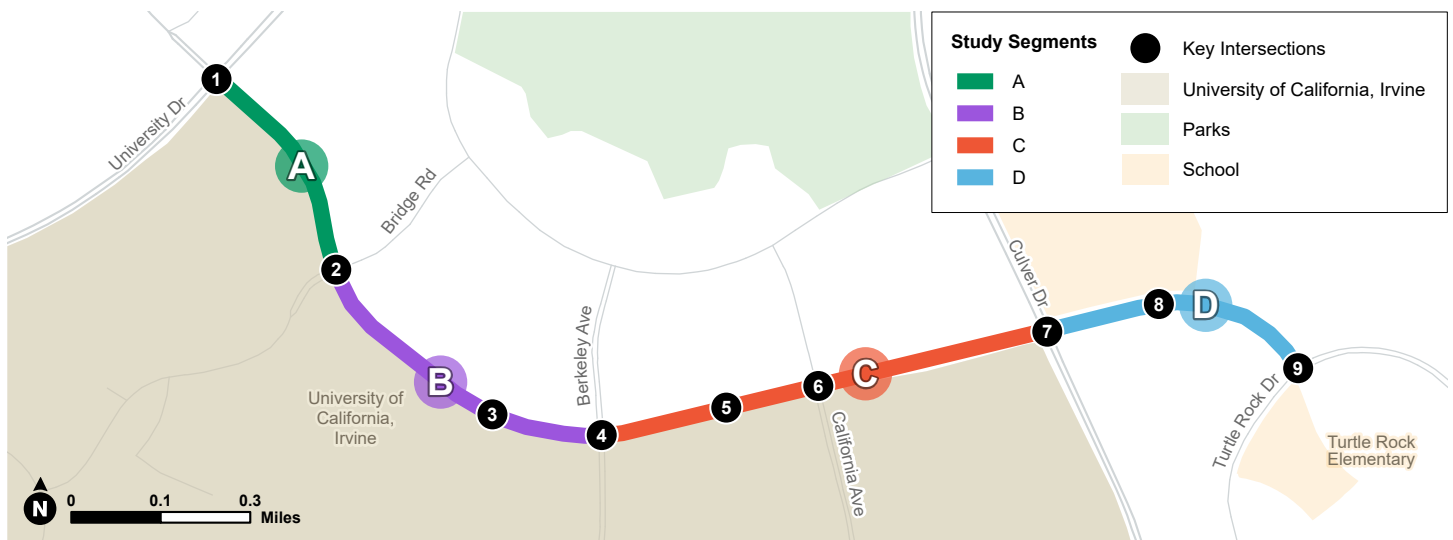


# Campus Drive Complete Streets & Safety Study

The City of Irvine is exploring ways to improve safety and mobility along Campus Drive between University Drive and Turtle Rock Drive. The Campus Drive Complete Streets & Safety Study will develop and analyze potential enhancements to this critical roadway. Today, the corridor experiences **one of the highest crash rates in the City** and serves areas with **high pedestrian and micromobility activity**. These challenges provide opportunities for innovative solutions and a new street design that balances all road users.



# Who is Using Campus Drive?

Campus Drive serves a range of travel modes and trip types. Approximately **12%** of vehicle trips are localized, beginning and ending within the adjacent University Town Center or Turtle Rock neighborhoods. With its balanced mixture of land uses and proximity to key educational, commercial, and recreational uses, a higher share of trips are completed by walking, biking, or e-scootering than the City average.

## Pedestrian

Along the central portion of the corridor, nearly **2,000** pedestrians travel along Campus Drive daily. Major pedestrian generators include University Town Center, Campus Plaza, and University High School. High pedestrian volumes (**300 to 400 pedestrians during the afternoon peak period between noon and 5 p.m.**) are also observed crossing Campus Drive at nearly all intersections. This crossing activity is also supported by the pedestrian bridge located adjacent to University Town Center. Pedestrian activity is lower along the western portion of the corridor.

## Bike/E-Scooter

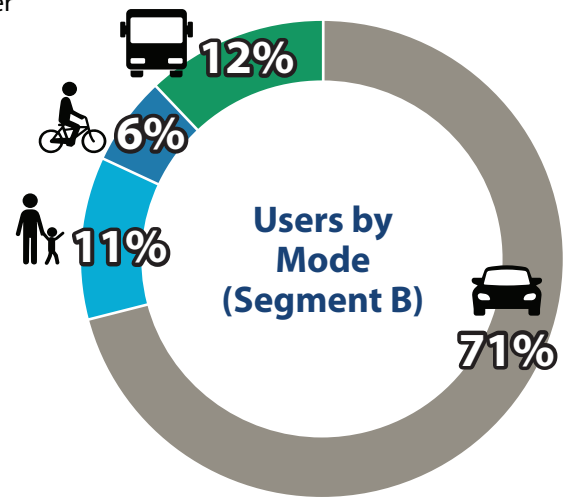
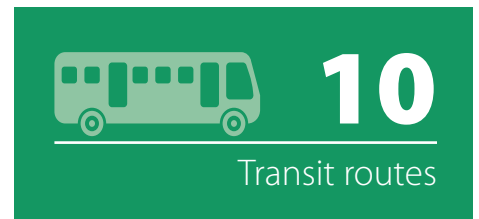
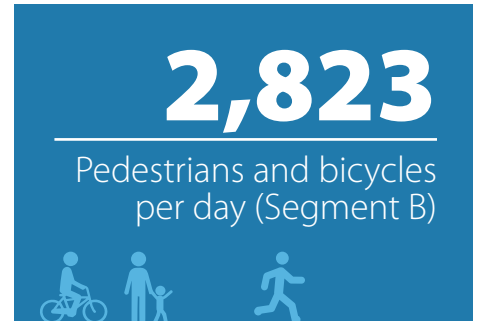
Approximately **900 bicyclists and e-scooter riders** travel along Campus Drive daily between Berkeley Avenue and Cornell. Currently, Class II striped bicycle lanes are provided in both directions along the entire corridor. Bicyclists and e-scooter riders are also frequently observed using the sidewalk due to a lack of separated on-street bike facilities.

## Vehicles

Vehicle traffic is the predominant mode of travel along Campus Drive. Traffic volumes are highest between University Drive and Bridge Road, approaching **20,000 vehicles** on a typical weekday. Approximately 3% of all vehicles are trucks with four or more axles.

## Transit

Campus Drive is served by **five** Orange County Transportation Authority (OCTA) bus routes and **five** Anteater Express bus routes operated by UC Irvine. These routes connect the corridor to the adjacent university campus, other Irvine neighborhoods, and regional transportation routes including Metrolink.



## How to Get Involved

Visit [cityofirvine.org/mobilityprojects](http://cityofirvine.org/mobilityprojects) or scan the QR code to learn more.

